



# LUXURY GOLF CARTS: THE ULTIMATE COLLECTION



AUTONOMOUS | ELECTRIC | CONNECTED  
GOLF CARTS





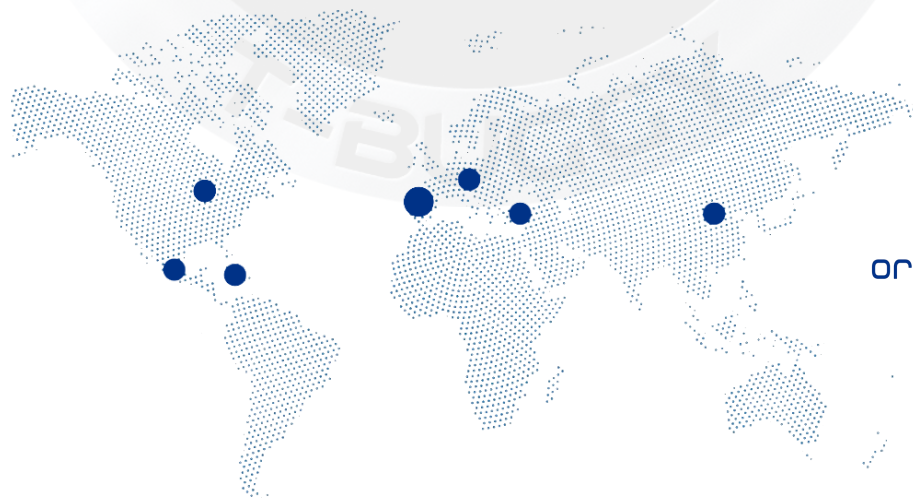
# T-BUGGY

Innovation, Style, and Autonomy

Founded in 2023 in San Sebastián, T-BUGGY is setting a new era in sustainable mobility with Spain's first luxury street-legal golf cart. Designed for leisure and golf, T-Buggy combines modern style with advanced technology to offer a unique experience. This electric, connected, and autonomous golf cart is ideal for golf courses, resorts, theme parks, villages, university campuses... providing driverless movement with its ADAS system (featuring radar, LiDAR, cameras, GPS, sensors, and more) for maximum safety and comfort.

The connectivity system includes vehicle fleet management and an entertainment system connected to the control tower. It includes a touch screen display with bluetooth, radio, Android Auto, CarPlay app and more. There is also a rear camera for parking.

T-Buggy is versatile, efficient, and environmentally friendly, thanks to its electric system and optional solar power. Available in various colors and styles, its design allows you to enjoy any environment safely and elegantly. They can be registered (road-legal)!





**MODEL H**





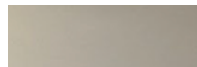
Red Wine Pearl



Silver Pearl



Carbon Gray Pearl



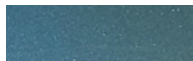
Champagne Pearl



Hazy Titanium Blue Pearl



Black Pearl



Light Hazy Titanium Blue Pearl



Gold-Pink Pearl



Breeze Blue-Green Pearl



Dark blue Pearl



Red Wine Pearl



Silver Pearl



Carbon Gray Pearl



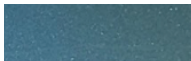
Champagne Pearl



Hazy Titanium Blue Pearl



Black Pearl



Light Hazy Titanium Blue Pearl



Gold-Pink Pearl



Breeze Blue-Green Pearl



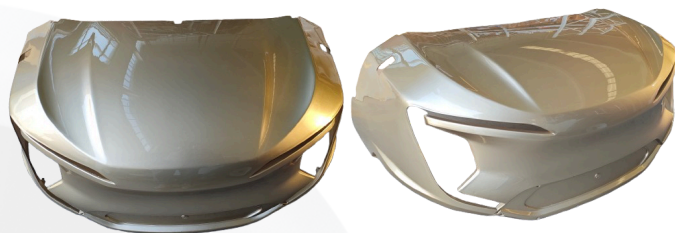
Dark blue Pearl



# NEW COLORS



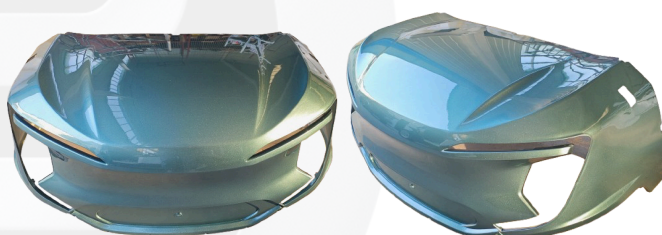
Red Wine Pearl



Champagne Pearl



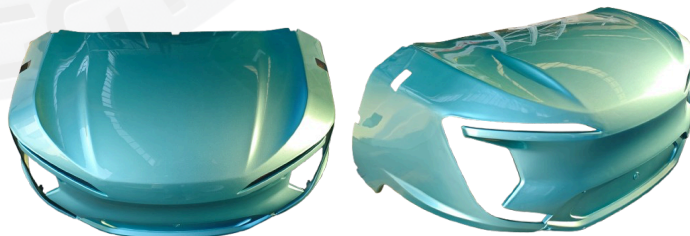
Hazy Titanium Blue Pearl



Light Hazy Titanium Blue Pearl



Gold-Pink Pearl



Breeze Blue-Green Pearl

	2 SEAT + GOLF	2 + 2 SEATS	4 SEATS	4 + 2 SEATS
POWER				
BATTERY	<ul style="list-style-type: none"> <li>72v 105Ah lithium battery</li> <li>72v 150Ah lithium battery</li> <li>72v 230Ah lithium battery</li> </ul>	<ul style="list-style-type: none"> <li>72v 105Ah lithium battery</li> <li>72v 150Ah lithium battery</li> <li>72v 230Ah lithium battery</li> </ul>	<ul style="list-style-type: none"> <li>72v 105Ah lithium battery</li> <li>72v 150Ah lithium battery</li> <li>72v 230Ah lithium battery</li> </ul>	<ul style="list-style-type: none"> <li>72v 105Ah lithium battery</li> <li>72v 150Ah lithium battery</li> <li>72v 230Ah lithium battery</li> </ul>
MOTOR	<ul style="list-style-type: none"> <li>AC 5KW DPD</li> <li>AC 7.5KW DPD</li> </ul>	<ul style="list-style-type: none"> <li>AC 5KW DPD</li> <li>AC 7.5KW DPD</li> </ul>	<ul style="list-style-type: none"> <li>AC 5KW DPD</li> <li>AC 7.5KW DPD</li> </ul>	<ul style="list-style-type: none"> <li>AC 5KW DPD</li> <li>AC 7.5KW DPD</li> </ul>
CONTROLLER	DALA 350A	DALA 350A	DALA 350A	DALA 350A
PERFORMANCE				
PASSENGER CAPACITY	2 + Golf bag	4	4	6
TOP SPEED (Adjustable)	<ul style="list-style-type: none"> <li>45 Km/h (AC 5KW DPD)</li> <li>55 Km/h (AC 7.5KW DPD)</li> </ul>	<ul style="list-style-type: none"> <li>45 Km/h (AC 5KW DPD)</li> <li>55 Km/h (AC 7.5KW DPD)</li> </ul>	<ul style="list-style-type: none"> <li>45 Km/h (AC 5KW DPD)</li> <li>55 Km/h (AC 7.5KW DPD)</li> </ul>	<ul style="list-style-type: none"> <li>45 Km/h (AC 5KW DPD)</li> <li>55 Km/h (AC 7.5KW DPD)</li> </ul>
RANGE (based on 45 km/h & 5KW)	90 Km (72v 105Ah lithium battery)	80 Km (72v 105Ah lithium battery)	80 Km (72v 105Ah lithium battery)	70 Km (72v 105Ah lithium battery)
RANGE (based on 45 Km/h & 5KW)	110 Km (72v 150Ah lithium battery)	100 Km (72v 150Ah lithium battery)	100 Km (72v 150Ah lithium battery)	90 Km (72v 150Ah lithium battery)
RANGE (based on 45 Km/h & 5KW)	160 Km (72v 230Ah lithium battery)	150 Km (72v 230Ah lithium battery)	150 Km (72v 230Ah lithium battery)	140 Km (72v 230Ah lithium battery)
MAXIMUM CLIMBING DEGREE	25%	25%	25%	20%
MEASSURES				
VEHICLE SIZE (mm)	2500 x 1350 x 2000	2950 x 1350 x 2150	3150 x 1350 x 2150	3600 x 1350 x 2150
WEIGH (without battery)	400 Kg	480 Kg	480 Kg	560 Kg
BATTERY WEIGH 72V 105Ah	68 Kg	68 Kg	68 Kg	68 Kg
BATTERY WEIGH 72V 150Ah	102 Kg	102 Kg	102 Kg	102 Kg
BATTERY WEIGH 72V 230Ah	130 Kg	130 Kg	130 Kg	130 Kg
WHEELBASE (mm)	1680	1680	2460	2460
MINIMUM GROUND CLEARANCE (mm) 14 inch tire	240	240	240	240
MINIMUM GROUND CLEARANCE (mm) 12 inch tire	180	180	180	180

	6 SEATS	6 + 2 SEATS	8 SEATS	8 + 2 SEATS
POWER				
BATTERY	<ul style="list-style-type: none"><li>72v 105Ah lithium battery</li><li>72v 150Ah lithium battery</li><li>72v 230Ah lithium battery</li></ul>	<ul style="list-style-type: none"><li>72v 105Ah lithium battery</li><li>72v 150Ah lithium battery</li><li>72v 230Ah lithium battery</li></ul>	<ul style="list-style-type: none"><li>72v 105Ah lithium battery</li><li>72v 150Ah lithium battery</li><li>72v 230Ah lithium battery</li></ul>	<ul style="list-style-type: none"><li>72v 105Ah lithium battery</li><li>72v 150Ah lithium battery</li><li>72v 230Ah lithium battery</li></ul>
MOTOR	<ul style="list-style-type: none"><li>AC 5KW DPD</li><li>AC 7.5KW DPD</li></ul>	AC 7.5KW DPD	AC 7.5KW DPD	AC 7.5KW DPD
CONTROLLER	DALA 350A	DALA 350A	DALA 350A	DALA 350A
PERFORMANCE				
PASSENGER CAPACITY	6	8	8	10
TOP SPEED (Adjustable)	<ul style="list-style-type: none"><li>45 Km/h (AC 5KW DPD)</li><li>55 Km/h (AC 7.5KW DPD)</li></ul>	45 km/h (AC 7.5KW DPD)	45 km/h (AC 7.5KW DPD)	45 km/h (AC 7.5KW DPD)
RANGE (based on 45 Km/h & 5KW/7.5KW)	70 Km (72v 105Ah lithium battery)	50 Km (72v 105Ah lithium battery)	50 Km (72v 105Ah lithium battery)	50 Km (72v 105Ah lithium battery)
RANGE (based on 45 Km/h & 5KW/7.5KW)	90 Km (72v 150Ah lithium battery)	70 Km (72v 150Ah lithium battery)	70 Km (72v 150Ah lithium battery)	70 Km (72v 150Ah lithium battery)
RANGE (based on 45 Km/h & 5KW/7.5KW)	140 Km (72v 230Ah lithium battery)	120 Km (72v 230Ah lithium battery)	120 Km (72v 230Ah lithium battery)	120 Km (72v 230Ah lithium battery)
MAXIMUM CLIMBING DEGREE	20%	20%	20%	20%
MEASSURES				
VEHICLE SIZE (mm)	4000 x 1350 x 2150	4450 x 1350 x 2150	4900 x 1350 x 2150	5350 x 1350 x 2150
WEIGH (without battery)	560 Kg	640 Kg	640 Kg	720 Kg
BATTERY WEIGH 72V 105Ah	68 Kg	68 Kg	68 Kg	68 Kg
BATTERY WEIGH 72V 150Ah	102 Kg	102 Kg	102 Kg	102 Kg
BATTERY WEIGH 72V 230Ah	130 Kg	130 Kg	130 Kg	130 Kg
WHEELBASE (mm)	3220	3220	3980	3980
MINIMUM GROUND CLEARANCE (mm) 14 inch tire	240	240	240	240
MINIMUM GROUND CLEARANCE (mm) 12 inch tire	180	180	180	180



## INTERIOR

STEERING WHEELS	Carbon fiber water transfer printing
CARPET	Anti-slip floor mat
INTERIOR MATERIAL	Carbon fiber water transfer printing interior
MULTIMEDIA DISPLAY	Android Auto & CarPlay, bluetooth, radio, phone, front camera, rear camera, microphone, USB/USC, forward and backward switch, odometer, battery level 8 inch
COASTER	2
ONE-CLICK START	Switch on/off button
CHARGER	2 Phone wireless charging USB & Type-C charger
FAN	Yes





DRIVING STEERING SYSTEM	
STEERING SYSTEM	Steering wheel with power steering (optional)
BRAKE SYSTEM	Four wheel disc brake + Electromagnetic parking brake
SUSPENSION SYSTEM	<ul style="list-style-type: none"> <li>• Front: Double Wisbone suspension</li> <li>• Rear: Corbel suspension</li> </ul>

SEATS	
SEAT	Artificial leather (high elastic self-healing, waterproof, sharp-scratch resistant)
BACKREST & SEAT CUSHION	Waterproof seat cushion
SEAT BELT	Two-point seat belt
HANDRAIL	Black PP hard plastic
BOTTOM SHELL	PP hard plastic

CART BODY	
BODY	PP hard plastic (front & rear body)
CHASSIS	Anticorrosive and rust-proof galvanized steel + anti-rust treatment
CEILING	Engineering hard plastic (Beige or Black)
CEILING SUPPORT	Waterproof * rust-proof galvanized steel
WINDSHIELD	Foldable

ELECTRONIC CONTROL SYSTEM	
HEADLIGHTS	2
FRONT TURN SIGNALS	2
FRONT LEAD LIGHTS	Yes
TAILLIGHTS	2 (1 Brake light & 1 Turn Signal)
HORN	Yes
REAR CAMERA	Yes
REVERSE ALARM	Yes
SPEAKER	Yes



**MODEL B**



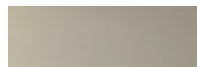
Red Wine Pearl



Silver Pearl



Carbon Gray Pearl



Champagne Pearl



Hazy Titanium Blue Pearl



Black Pearl



Light Hazy Titanium Blue Pearl



Gold-Pink Pearl



Breeze Blue-Green Pearl



Dark blue Pearl

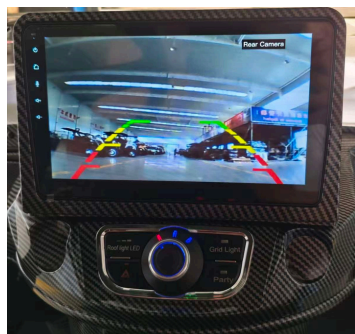
	2 SEAT + GOLF	2 + 2 SEATS	4 SEATS	4 + 2 SEATS
POWER				
BATTERY	<ul style="list-style-type: none"> <li>72v 105Ah lithium battery</li> <li>72v 150Ah lithium battery</li> <li>72v 230Ah lithium battery</li> </ul>	<ul style="list-style-type: none"> <li>72v 105Ah lithium battery</li> <li>72v 150Ah lithium battery</li> <li>72v 230Ah lithium battery</li> </ul>	<ul style="list-style-type: none"> <li>72v 105Ah lithium battery</li> <li>72v 150Ah lithium battery</li> <li>72v 230Ah lithium battery</li> </ul>	<ul style="list-style-type: none"> <li>72v 105Ah lithium battery</li> <li>72v 150Ah lithium battery</li> <li>72v 230Ah lithium battery</li> </ul>
MOTOR	<ul style="list-style-type: none"> <li>AC 5KW DPD</li> <li>AC 7.5KW DPD</li> </ul>	<ul style="list-style-type: none"> <li>AC 5KW DPD</li> <li>AC 7.5KW DPD</li> </ul>	<ul style="list-style-type: none"> <li>AC 5KW DPD</li> <li>AC 7.5KW DPD</li> </ul>	<ul style="list-style-type: none"> <li>AC 5KW DPD</li> <li>AC 7.5KW DPD</li> </ul>
CONTROLLER	DALA 350A	DALA 350A	DALA 350A	DALA 350A
PERFORMANCE				
PASSENGER CAPACITY	2 + Golf bag	4	4	6
TOP SPEED (Adjustable)	<ul style="list-style-type: none"> <li>45 Km/h (AC 5KW DPD)</li> <li>55 Km/h (AC 7.5KW DPD)</li> </ul>	<ul style="list-style-type: none"> <li>45 Km/h (AC 5KW DPD)</li> <li>55 Km/h (AC 7.5KW DPD)</li> </ul>	<ul style="list-style-type: none"> <li>45 Km/h (AC 5KW DPD)</li> <li>55 Km/h (AC 7.5KW DPD)</li> </ul>	<ul style="list-style-type: none"> <li>45 Km/h (AC 5KW DPD)</li> <li>55 Km/h (AC 7.5KW DPD)</li> </ul>
RANGE (based on 45 km/h & 5KW)	90 Km (72v 105Ah lithium battery)	80 Km (72v 105Ah lithium battery)	80 Km (72v 105Ah lithium battery)	70 Km (72v 105Ah lithium battery)
RANGE (based on 45 Km/h & 5KW)	110 Km (72v 150Ah lithium battery)	100 Km (72v 150Ah lithium battery)	100 Km (72v 150Ah lithium battery)	90 Km (72v 150Ah lithium battery)
RANGE (based on 45 Km/h & 5KW)	160 Km (72v 230Ah lithium battery)	150 Km (72v 230Ah lithium battery)	150 Km (72v 230Ah lithium battery)	140 Km (72v 230Ah lithium battery)
MAXIMUM CLIMBING DEGREE	25%	25%	25%	20%
MEASSURES				
VEHICLE SIZE (mm)	2500 x 1350 x 2000	2950 x 1350 x 2150	3150 x 1350 x 2150	3700 x 1350 x 2150
WEIGH (without battery)	400 Kg	480 Kg	480 Kg	560 Kg
BATTERY WEIGH 72V 105Ah	68 Kg	68 Kg	68 Kg	68 Kg
BATTERY WEIGH 72V 150Ah	102 Kg	102 Kg	102 Kg	102 Kg
BATTERY WEIGH 72V 230Ah	130 Kg	130 Kg	130 Kg	130 Kg
WHEELBASE (mm)	1680	1680	2460	2460
MINIMUM GROUND CLEARANCE (mm) 14 inch tire	240	240	240	240
MINIMUM GROUND CLEARANCE (mm) 12 inch tire	180	180	180	180

	6 SEATS	6 + 2 SEATS	8 SEATS	8 + 2 SEATS
POWER				
<b>BATTERY</b>	<ul style="list-style-type: none"><li>72v 105Ah lithium battery</li><li>72v 150Ah lithium battery</li><li>72v 230Ah lithium battery</li></ul>	<ul style="list-style-type: none"><li>72v 105Ah lithium battery</li><li>72v 150Ah lithium battery</li><li>72v 230Ah lithium battery</li></ul>	<ul style="list-style-type: none"><li>72v 105Ah lithium battery</li><li>72v 150Ah lithium battery</li><li>72v 230Ah lithium battery</li></ul>	<ul style="list-style-type: none"><li>72v 105Ah lithium battery</li><li>72v 150Ah lithium battery</li><li>72v 230Ah lithium battery</li></ul>
<b>MOTOR</b>	<ul style="list-style-type: none"><li>AC 5KW DPD</li><li>AC 7.5KW DPD</li></ul>	AC 7.5KW DPD	AC 7.5KW DPD	AC 7.5KW DPD
<b>CONTROLLER</b>	DALA 350A	DALA 350A	DALA 350A	DALA 350A
PERFORMANCE				
<b>PASSENGER CAPACITY</b>	6	8	8	10
<b>TOP SPEED (Adjustable)</b>	<ul style="list-style-type: none"><li>45 Km/h (AC 5KW DPD)</li><li>55 Km/h (AC 7.5KW DPD)</li></ul>	45 km/h (AC 7.5KW DPD)	45 km/h (AC 7.5KW DPD)	45 km/h (AC 7.5KW DPD)
<b>RANGE (based on 45 km/h &amp; 5KW/7.5KW)</b>	70 Km (72v 105Ah lithium battery)	50 Km (72v 105Ah lithium battery)	50 Km (72v 105Ah lithium battery)	50 Km (72v 105Ah lithium battery)
<b>RANGE (based on 25 Km/h &amp; 5KW/7.5KW)</b>	90 Km (72v 150Ah lithium battery)	70 Km (72v 150Ah lithium battery)	70 Km (72v 150Ah lithium battery)	70 Km (72v 150Ah lithium battery)
<b>RANGE (based on 25 Km/h &amp; 5KW/7.5KW)</b>	140 Km (72v 230Ah lithium battery)	120 Km (72v 230Ah lithium battery)	120 Km (72v 230Ah lithium battery)	120 Km (72v 230Ah lithium battery)
<b>MAXIMUM CLIMBING DEGREE</b>	20%	20%	20%	20%
MEASSURES				
<b>VEHICLE SIZE (mm)</b>	3900 x 1350 x 2150	4300 x 1350 x 2150	4700 x 1350 x 2150	5000 x 1350 x 2150
<b>WEIGH (without battery)</b>	560 Kg	640 Kg	640 Kg	720 Kg
<b>BATTERY WEIGH 72V 105Ah</b>	68 Kg	68 Kg	68 Kg	68 Kg
<b>BATTERY WEIGH 72V 150Ah</b>	102 Kg	102 Kg	102 Kg	102 Kg
<b>BATTERY WEIGH 72V 230Ah</b>	130 Kg	130 Kg	130 Kg	130 Kg
<b>WHEELBASE (mm)</b>	3220	3220	3980	3980
<b>MINIMUM GROUND CLEARANCE (mm) 14 inch tire</b>	240	240	240	240
<b>MINIMUM GROUND CLEARANCE (mm) 12 inch tire</b>	180	180	180	180



## INTERIOR

STEERING WHEELS	Carbon fiber water transfer printing
CARPET	Anti-slip floor mat
INTERIOR MATERIAL	Carbon fiber water transfer printing interior
MULTIMEDIA DISPLAY	Android Auto & CarPlay, bluetooth, radio, phone, rear camera, microphone, USB/USC, forward and backward switch, odometer, battery level 8 inch
COASTER	4
ONE-CLICK START	Switch on/off button
CHARGER	1 Phone wireless charging USB & Type-C charger
FAN	Yes





DRIVING STEERING SYSTEM	
STEERING SYSTEM	Steering wheel with power steering (optional)
BRAKE SYSTEM	Four wheel disc brake + Electromagnetic parking brake
SUSPENSION SYSTEM	<ul style="list-style-type: none"> <li>• Front: McPherson independent suspension</li> <li>• Rear: Corbel suspension</li> </ul> or <ul style="list-style-type: none"> <li>• Front: McPherson independent suspension</li> <li>• Rear: Corbel suspension</li> </ul>

SEATS	
SEAT	Styling sponge cushion & Artificial leather (high elastic self-healing, waterproof, sharp-scratch resistant)
BACKREST & SEAT CUSHION	Waterproof seat cushion
SEAT BELT	Two-point seat belt
HANDRAIL	Black PP hard plastic
BOTTOM SHELL	PP hard plastic

CART BODY	
BODY	PP hard plastic (front & rear body)
CHASSIS	Anticorrosive and rust-proof galvanized steel + anti-rust treatment
CEILING	Engineering hard plastic (Beige or Black)
CEILING SUPPORT	Waterproof * rust-proof galvanized steel
WINDSHIELD	Foldable

ELECTRONIC CONTROL SYSTEM	
HEADLIGHTS	2
FRONT TURN SIGNALS	2
FRONT LEAD LIGHTS	Yes
TAILLIGHTS	2 (1 Brake light & 1 Turn Signal)
HORN	Yes
REAR CAMERA	Yes
REVERSE ALARM	Yes
SPEAKER	Yes



**MODEL G**





Available in more colors, in golf cart model and from 2 to 10 passengers models.  
Contact us: [info@tbuggy.com](mailto:info@tbuggy.com)

	2 SEAT + GOLF	2 + 2 SEATS	4 SEATS	4 + 2 SEATS
POWER				
BATTERY	<ul style="list-style-type: none"> <li>72v 105Ah lithium battery</li> <li>72v 150Ah lithium battery</li> <li>72v 230Ah lithium battery</li> </ul>	<ul style="list-style-type: none"> <li>72v 105Ah lithium battery</li> <li>72v 150Ah lithium battery</li> <li>72v 230Ah lithium battery</li> </ul>	<ul style="list-style-type: none"> <li>72v 105Ah lithium battery</li> <li>72v 150Ah lithium battery</li> <li>72v 230Ah lithium battery</li> </ul>	<ul style="list-style-type: none"> <li>72v 105Ah lithium battery</li> <li>72v 150Ah lithium battery</li> <li>72v 230Ah lithium battery</li> </ul>
MOTOR	<ul style="list-style-type: none"> <li>AC 5KW DPD</li> <li>AC 7.5KW DPD</li> </ul>	<ul style="list-style-type: none"> <li>AC 5KW DPD</li> <li>AC 7.5KW DPD</li> </ul>	<ul style="list-style-type: none"> <li>AC 5KW DPD</li> <li>AC 7.5KW DPD</li> </ul>	<ul style="list-style-type: none"> <li>AC 5KW DPD</li> <li>AC 7.5KW DPD</li> </ul>
CONTROLLER	DALA 350A	DALA 350A	DALA 350A	DALA 350A
PERFORMANCE				
PASSENGER CAPACITY	2 + Golf bag	4	4	6
TOP SPEED (Adjustable)	<ul style="list-style-type: none"> <li>45 Km/h (AC 5KW DPD)</li> <li>55 Km/h (AC 7.5KW DPD)</li> </ul>	<ul style="list-style-type: none"> <li>45 Km/h (AC 5KW DPD)</li> <li>55 Km/h (AC 7.5KW DPD)</li> </ul>	<ul style="list-style-type: none"> <li>45 Km/h (AC 5KW DPD)</li> <li>55 Km/h (AC 7.5KW DPD)</li> </ul>	<ul style="list-style-type: none"> <li>45 Km/h (AC 5KW DPD)</li> <li>55 Km/h (AC 7.5KW DPD)</li> </ul>
RANGE (based on 45 km/h & 5KW)	90 Km (72v 105Ah lithium battery)	80 Km (72v 105Ah lithium battery)	80 Km (72v 105Ah lithium battery)	70 Km (72v 105Ah lithium battery)
RANGE (based on 45 Km/h & 5KW)	110 Km (72v 150Ah lithium battery)	100 Km (72v 150Ah lithium battery)	100 Km (72v 150Ah lithium battery)	90 Km (72v 150Ah lithium battery)
RANGE (based on 45 Km/h & 5KW)	160 Km (72v 230Ah lithium battery)	150 Km (72v 230Ah lithium battery)	150 Km (72v 230Ah lithium battery)	140 Km (72v 230Ah lithium battery)
MAXIMUM CLIMBING DEGREE	25%	25%	25%	20%
MEASSURES				
VEHICLE SIZE (mm)	2500 x 1280 x 2000	2900 x 1280 x 2150	3150 x 1280 x 2150	3650 x 1280 x 2150
WEIGH (without battery)	400 Kg	480 Kg	480 Kg	560 Kg
BATTERY WEIGH 72V 105Ah	68 Kg	68 Kg	68 Kg	68 Kg
BATTERY WEIGH 72V 150Ah	102 Kg	102 Kg	102 Kg	102 Kg
BATTERY WEIGH 72V 230Ah	130 Kg	130 Kg	130 Kg	130 Kg
WHEELBASE (mm)	1680	1680	2460	2460
MINIMUM GROUND CLEARANCE (mm) 14 inch tire	240	240	240	240
MINIMUM GROUND CLEARANCE (mm) 12 inch tire	180	180	180	180

	6 SEATS	6 + 2 SEATS	8 SEATS	8 + 2 SEATS
POWER				
<b>BATTERY</b>	<ul style="list-style-type: none"><li>72v 105Ah lithium battery</li><li>72v 150Ah lithium battery</li><li>72v 230Ah lithium battery</li></ul>	<ul style="list-style-type: none"><li>72v 105Ah lithium battery</li><li>72v 150Ah lithium battery</li><li>72v 230Ah lithium battery</li></ul>	<ul style="list-style-type: none"><li>72v 105Ah lithium battery</li><li>72v 150Ah lithium battery</li><li>72v 230Ah lithium battery</li></ul>	<ul style="list-style-type: none"><li>72v 105Ah lithium battery</li><li>72v 150Ah lithium battery</li><li>72v 230Ah lithium battery</li></ul>
<b>MOTOR</b>	<ul style="list-style-type: none"><li>AC 5KW DPD</li><li>AC 7.5KW DPD</li></ul>	AC 7.5KW DPD	AC 7.5KW DPD	AC 7.5KW DPD
<b>CONTROLLER</b>	DALA 350A	DALA 350A	DALA 350A	DALA 350A
PERFORMANCE				
<b>PASSENGER CAPACITY</b>	6	8	8	10
<b>TOP SPEED (Adjustable)</b>	<ul style="list-style-type: none"><li>45 Km/h (AC 5KW DPD)</li><li>55 Km/h (AC 7.5KW DPD)</li></ul>	45 km/h (AC 7.5KW DPD)	45 km/h (AC 7.5KW DPD)	45 km/h (AC 7.5KW DPD)
<b>RANGE (based on 45 Km/h &amp; 5KW/7.5KW)</b>	70 Km (72v 105Ah lithium battery)	50 Km (72v 105Ah lithium battery)	50 Km (72v 105Ah lithium battery)	50 Km (72v 105Ah lithium battery)
<b>RANGE (based on 45 Km/h &amp; 5KW/7.5KW)</b>	90 Km (72v 150Ah lithium battery)	70 Km (72v 150Ah lithium battery)	70 Km (72v 150Ah lithium battery)	70 Km (72v 150Ah lithium battery)
<b>RANGE (based on 45 Km/h &amp; 5KW/7.5KW)</b>	140 Km (72v 230Ah lithium battery)	120 Km (72v 230Ah lithium battery)	120 Km (72v 230Ah lithium battery)	120 Km (72v 230Ah lithium battery)
<b>MAXIMUM CLIMBING DEGREE</b>	20%	20%	20%	20%
MEASSURES				
<b>VEHICLE SIZE (mm)</b>	3950 x 1280 x 2150	4250 x 1280 x 2150	4750 x 1280 x 2150	5050 x 1280 x 2150
<b>WEIGH (without battery)</b>	560 Kg	640 Kg	640 Kg	720 Kg
<b>BATTERY WEIGH 72V 105Ah</b>	68 Kg	68 Kg	68 Kg	68 Kg
<b>BATTERY WEIGH 72V 150Ah</b>	102 Kg	102 Kg	102 Kg	102 Kg
<b>BATTERY WEIGH 72V 230Ah</b>	130 Kg	130 Kg	130 Kg	130 Kg
<b>WHEELBASE (mm)</b>	3220	3220	3980	3980
<b>MINIMUM GROUND CLEARANCE (mm) 14 inch tire</b>	240	240	240	240
<b>MINIMUM GROUND CLEARANCE (mm) 12 inch tire</b>	180	180	180	180



## INTERIOR

STEERING WHEELS	Carbon fiber water transfer printing
CARPET	Anti-slip floor mat
INTERIOR MATERIAL	Carbon fiber water transfer printing interior
MULTIMEDIA DISPLAY	Android Auto & CarPlay, bluetooth, radio, phone, front camera, rear camera, microphone, USB/USC, forward and backward switch, odometer, battery level 8 inch
COASTER	4
ONE-CLICK START	Switch on/off button
CHARGER	1 Phone wireless charging USB & Type-C charger
FAN	Yes





DRIVING STEERING SYSTEM	
STEERING SYSTEM	Steering wheel with power steering (optional)
BRAKE SYSTEM	Four wheel disc brake + Electromagnetic parking brake
SUSPENSION SYSTEM	<ul style="list-style-type: none"> <li>• Front: Double Wisbone suspension</li> <li>• Rear: Corbel suspension</li> </ul>

SEATS	
SEAT	Artificial leather (high elastic self-healing, waterproof, sharp-scratch resistant)
BACKREST & SEAT CUSHION	Waterproof seat cushion
SEAT BELT	Two-point seat belt
HANDRAIL	Black PP hard plastic
BOTTOM SHELL	PP hard plastic

CART BODY	
BODY	PP hard plastic (front & rear body)
CHASSIS	Anticorrosive and rust-proof galvanized steel + anti-rust treatment
CEILING	Engineering hard plastic (Beige or Black)
CEILING SUPPORT	Waterproof * rust-proof galvanized steel
WINDSHIELD	Foldable

ELECTRONIC CONTROL SYSTEM	
HEADLIGHTS	2
FRONT TURN SIGNALS	2
FRONT LEAD LIGHTS	Yes
TAILLIGHTS	2 (1 Brake light & 1 Turn Signal)
HORN	Yes
REAR CAMERA	Yes
REVERSE ALARM	Yes
SPEAKER	Yes



## STANDARD SEAT MODELS



All seats are available in black, brown, beige, brown-orange and white colors. There is the option for the seats to be heated.



# ROTATABLE ARMREST SEAT MODELS



All seats are available in black, brown, beige and white colors. There is the option for the seats to be heated.



Standard steering wheel



14 inch Mine tire



12 inch Mine tire



Wheel with scorecard holder



14 inch Grass tire



12 inch Grass tire



Front storage basket



Electric car refrigerator



Roof spotlight



Step



Cargo Box for:  
Trash, Beverage, Food...  
(Back View)



Cargo Box for:  
Trash, Beverage, Food...  
(Lateral View)



Sand Bottle



Thermo Box



Rear Golf Bag Position



**Additional:**

- Party Lights
- Premium Speakers







**AUTONOMOUS | ELECTRIC | CONNECTED**  
**GOLF CART**

[www.tbuggy.com](http://www.tbuggy.com)



[tbuggy@oribay.com](mailto:tbuggy@oribay.com)